



The Millbrook Power (Gas Fired Power Station) Order

2.7 Rights of Way Streets and Access Plan

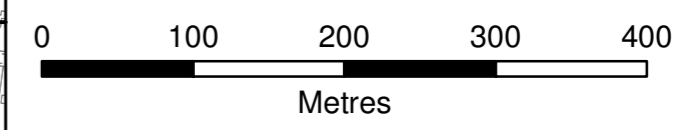
Planning Act 2008
The Infrastructure Planning
(Applications: Prescribed Forms and Procedure) Regulations 2009

PINS Reference Number: EN010068
Document Reference: 2.7
Regulation Number: 5(2)(k)
Author: Carter Jonas

Revision	Date	Description
0	October 2017	Submission Version



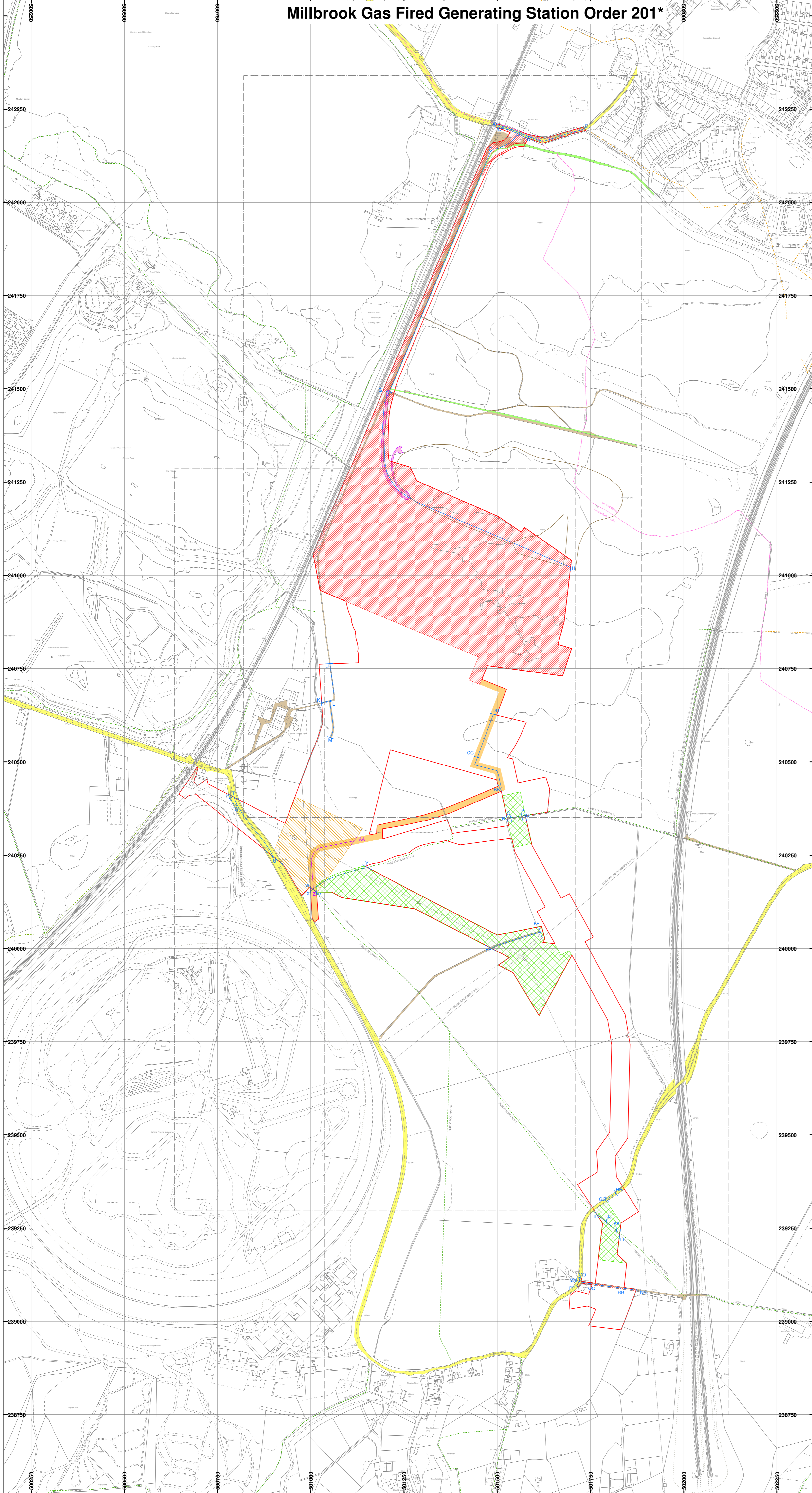
Millbrook Gas Fired Generating Station Order 201*



Reproduced from the Ordnance Survey Map with permission of the Controller of Her Majesty's Stationery Office. © Crown Copyright 2017. Carter Jonas LLP ES100004458

Legend:

- Order Limits
- Unclassified roads (minor roads)
- Private roads
- Public Rights of Way (current / to remain) (Central Bedfordshire Council)
- Public Rights of Way (current / to remain) (Bedford Borough Council)
- Areas within which users of the Public Right of Way will be diverted (Central Bedfordshire Council)
- Private maintenance of new or altered means of access
- Public maintenance of new or altered means of access (Central Bedfordshire Council)
- Public maintenance of new or altered means of access (Bedford Borough Council)
- Low Level Restoration Scheme Secondary Access Road
- Low Level Restoration Scheme Access Ramp
- Low Level Restoration Scheme Permissive Footpaths
- Covanta Footpath
- Electrical Connection (d) (Work Package 6) (Maximum Limits of Deviation)
- Limits of street to be temporarily prohibited or restricted
- Limits of street to be permanently stopped up
- Local Authority Boundary
- Sheet Edges



Created by:
Carter Jonas LLP
2 Snow Hill
Birmingham
B4 6GA
www.carterjonas.co.uk
millbrook@carterjonas.co.uk

Carter Jonas

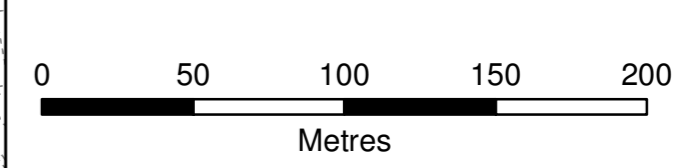
Created for:
Millbrook Power Limited
Drax Power Station
Drax, Selby
North Yorkshire
YO8 8PH
www.millbrookpower.co.uk



Title:
Rights of Way, Streets and Access Plan Key Plan
The Infrastructure Planning (Applications: Prescribed Forms and Procedure) Regulations 2009
Regulation 5(2)(k) Document Reference: 2.7

Scale: 1:5000 @A1		Date: 06 October 2017
Dwg no: J0008128-300		Revision D
Drawn by: IM	Checked by: ML	Approved by: MD

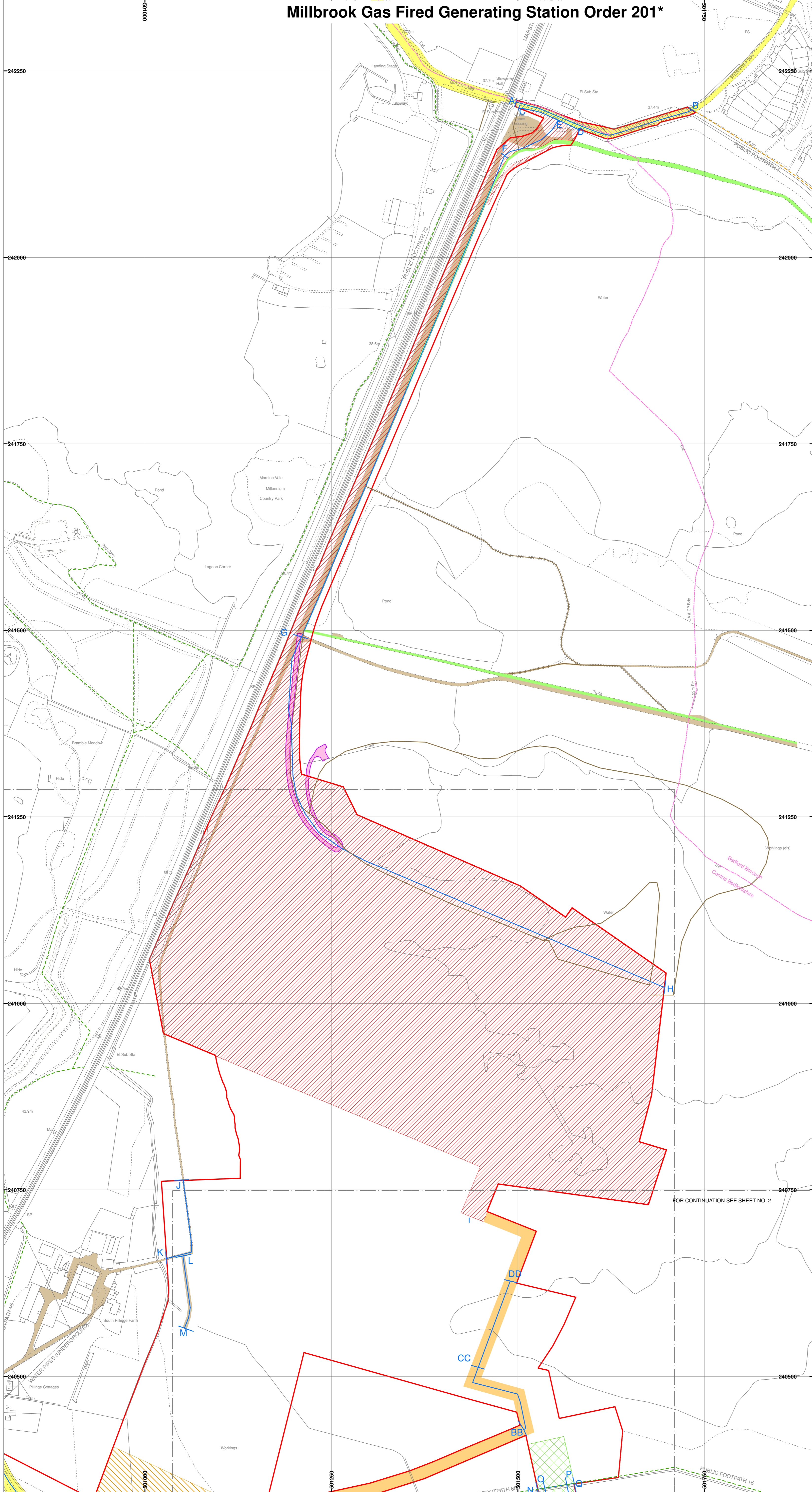
Millbrook Gas Fired Generating Station Order 201*



Reproduced from the Ordnance Survey Map with permission of the Controller of Her Majesty's Stationery Office. © Crown Copyright 2017. Carter Jonas LLP ES100004458

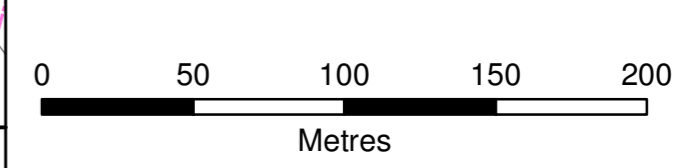
Legend:

- Order Limits
- Unclassified roads (minor roads)
- Private roads
- Public Rights of Way (current / to remain) (Central Bedfordshire Council)
- Public Rights of Way (current / to remain) (Bedford Borough Council)
- Areas within which users of the Public Right of Way will be diverted (Central Bedfordshire Council)
- Private maintenance of new or altered means of access
- Public maintenance of new or altered means of access (Central Bedfordshire Council)
- Public maintenance of new or altered means of access (Bedford Borough Council)
- Low Level Restoration Scheme Secondary Access Road
- Low Level Restoration Scheme Access Ramp
- Low Level Restoration Scheme Permissive Footpaths
- Covanta Footpath
- Electrical Connection (d) (Work Package 6) (Maximum Limits of Deviation)
- A—B Limits of street to be temporarily prohibited or restricted
- A—B Limits of street to be permanently stopped up
- Local Authority Boundary
- Sheet Edges



<p>Created by: Carter Jonas LLP 2 Snow Hill Birmingham B4 6GA www.carterjonas.co.uk millbrook@carterjonas.co.uk</p>	<p>Carter Jonas</p>
<p>Created for: Millbrook Power Limited Drax Power Station Drax, Selby North Yorkshire YO8 8PH www.millbrookpower.co.uk</p>	
<p>Title: Rights of Way, Streets and Access Plan (Sheet 1 of 3) The Infrastructure Planning (Applications: Prescribed Forms and Procedure) Regulations 2009 Regulation 5(2)(k)</p>	
<p>Document Reference: 2.7</p>	
<p>Scale: 1:2500 @A1</p>	<p>Date: 06 October 2017</p>
<p>Dwg no: J0008128-301</p>	<p>Revision D</p>
<p>Drawn by: IM</p>	<p>Checked by: ML</p>
<p>Approved by: MD</p>	

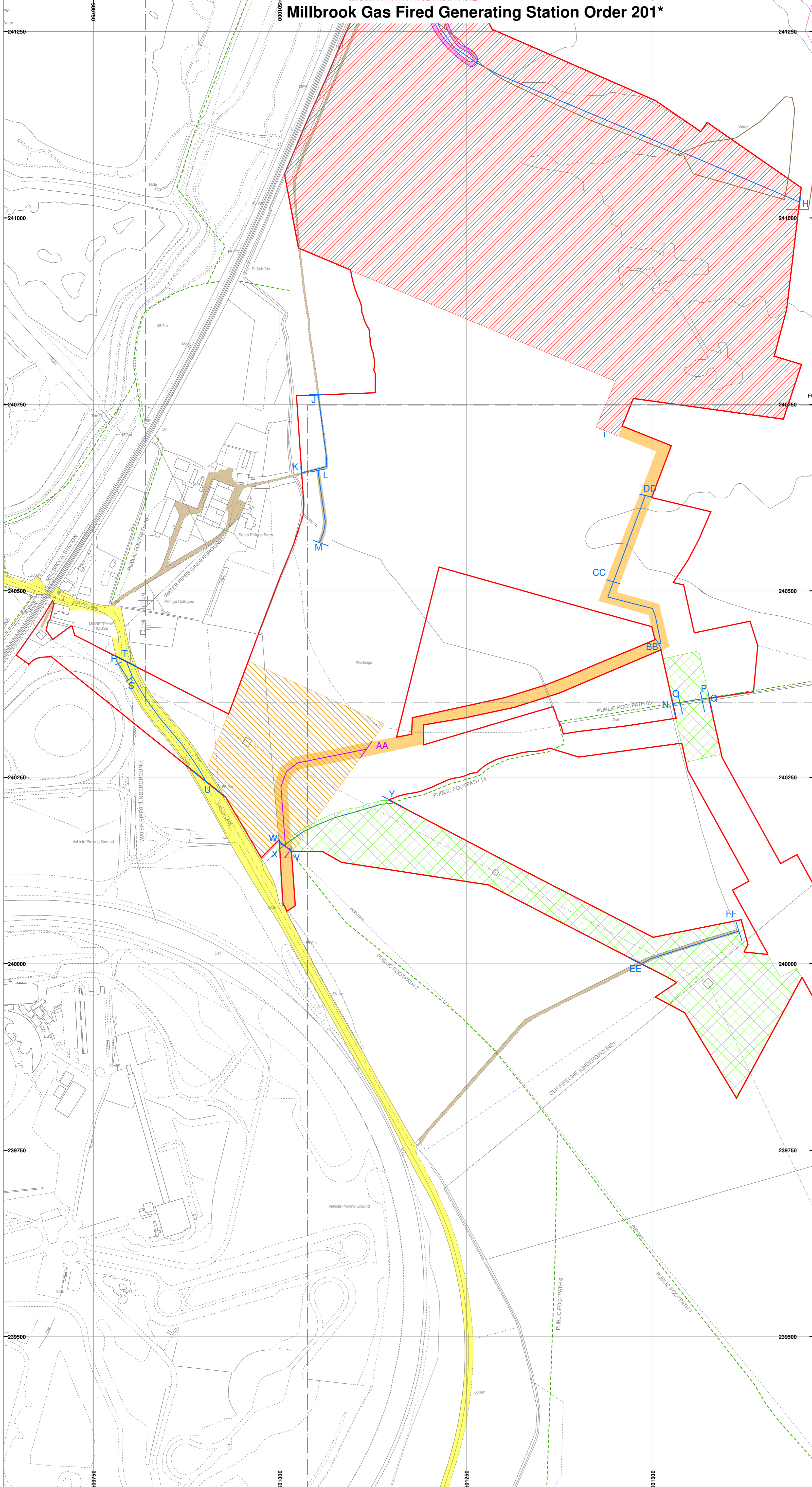
Millbrook Gas Fired Generating Station Order 201*



Reproduced from the Ordnance Survey Map with permission of the Controller of Her Majesty's Stationery Office. © Crown Copyright 2017. Carter Jonas LLP ES100004458

Legend:

- Order Limits
- Unclassified roads (minor roads)
- Private roads
- Public Rights of Way (current / to remain) (Central Bedfordshire Council)
- Public Rights of Way (current / to remain) (Bedford Borough Council)
- Areas within which users of the Public Right of Way will be diverted (Central Bedfordshire Council)
- Private maintenance of new or altered means of access
- Public maintenance of new or altered means of access (Central Bedfordshire Council)
- Public maintenance of new or altered means of access (Bedford Borough Council)
- Low Level Restoration Scheme Secondary Access Road
- Low Level Restoration Scheme Access Ramp
- Low Level Restoration Scheme Permissive Footpaths
- Covanta Footpath
- Electrical Connection (d) (Work Package 6) (Maximum Limits of Deviation)
- Limits of street to be temporarily prohibited or restricted
- Limits of street to be permanently stopped up
- Local Authority Boundary
- Sheet Edges



<p>Created by: Carter Jonas LLP 2 Snow Hill Birmingham B4 6GA www.carterjonas.co.uk millbrook@carterjonas.co.uk</p>	
<p>Created for: Millbrook Power Limited Drax Power Station Drax, Selby North Yorkshire YO8 8PH www.millbrookpower.co.uk</p>	
<p>Title: Rights of Way, Streets and Access Plan (Sheet 2 of 3) The Infrastructure Planning (Applications: Prescribed Forms and Procedure) Regulations 2009 Regulation 5(2)(k)</p>	
<p>Document Reference: 2.7</p>	
Scale: 1:2500 @A1	Date: 06 October 2017
Dwg no: J0008128-302	Revision D
Drawn by: IM	Checked by: ML
	Approved by: MD

